

DEUTSCHER

TE910

RIDE-ON MOWER



Spare Parts

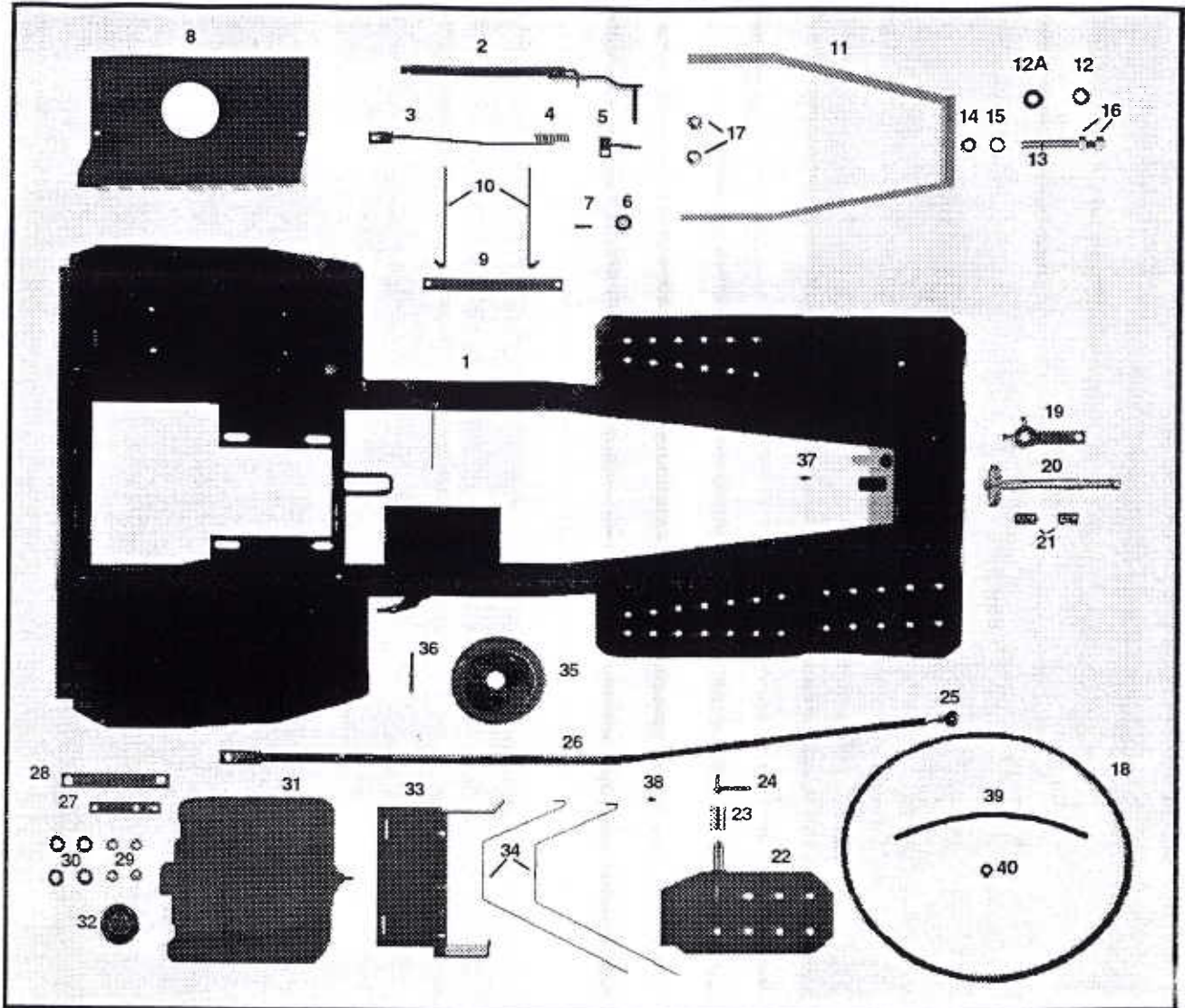
Manual

A PRODUCT OF AUSTRALIA

**WHEN ORDERING PARTS
SPECIFY THE MODEL AND SERIAL NUMBER
ON THE NAME PLATE OF THE MOWER
AND THE PART NUMBER IN THIS MANUAL**

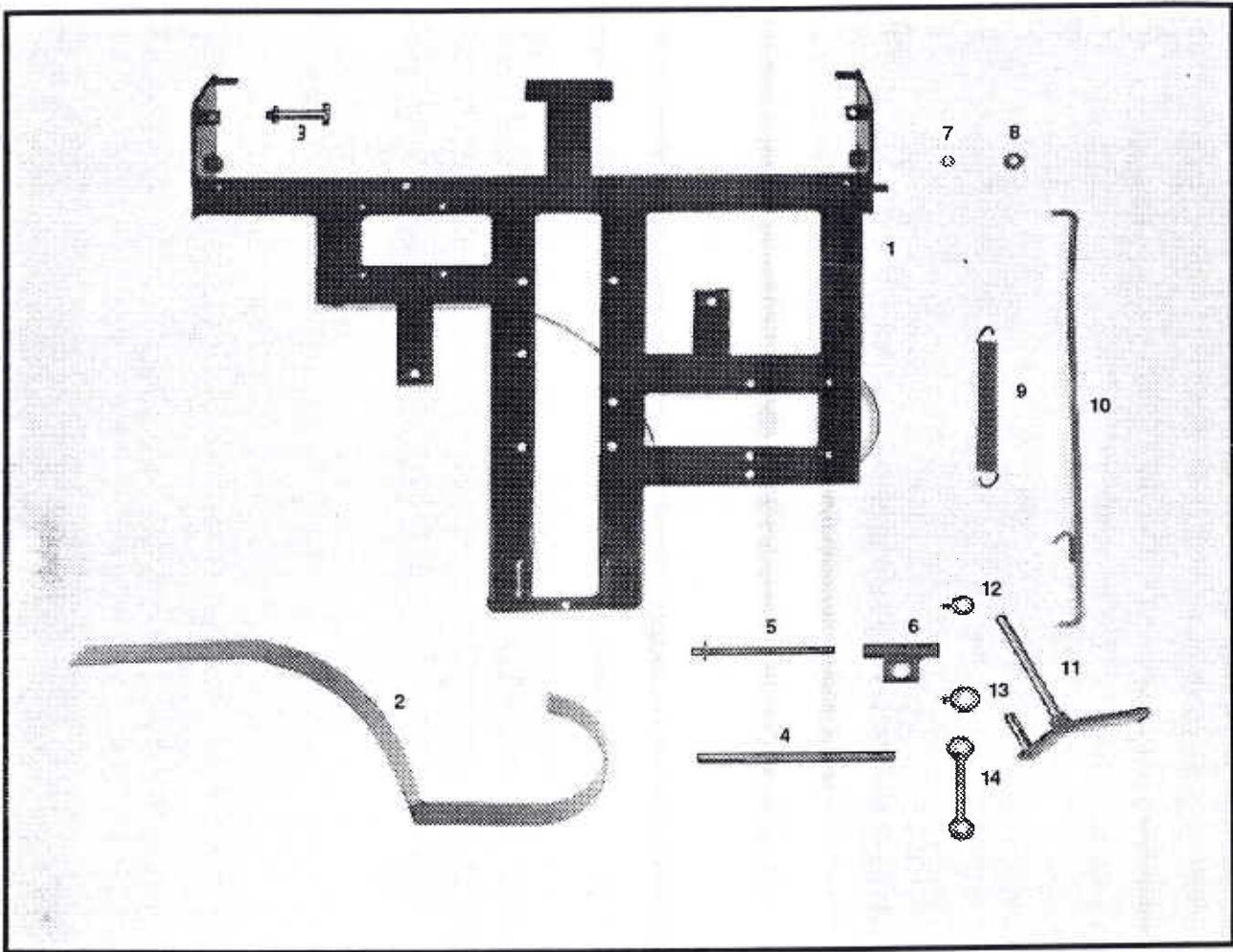
**THE MANUFACTURERS RESERVE THE RIGHT TO ALTER, CHANGE OR VARY THE
SPECIFICATIONS OF THE MACHINE OR ANY OF THE COMPONENT PARTS
AT ANY TIME WITH OUT NOTICE**

CHASSIS ASSEMBLY



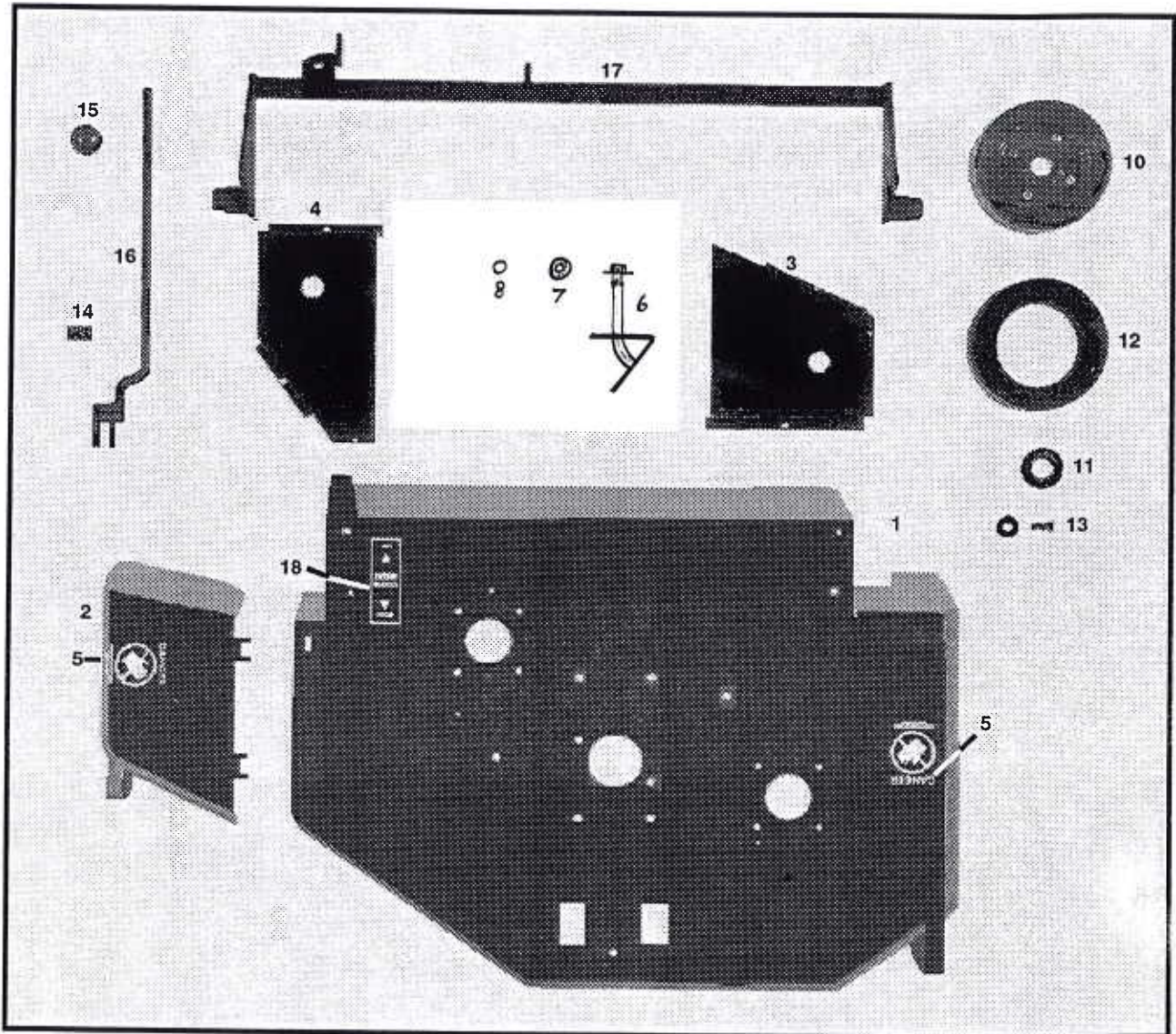
ILLUS	DESCRIPTION	PART No.	ILLUS	DESCRIPTION	PART No.
1	Chassis	T500	22	Pedal	T514
2	Hand Brake Assembly	T501	23	Bush	RD146
3	Adjustment Lever	T502	24	Connector	T515
4	Spring	R87	25	Ball Joint 5/16"	T516
5	Connector	T503	26	Speed Rod, Inc. Ball Joint	T517
6	Roller x 2	H07	27	Speed Link Hinge, Short	T518
7	Pin x 2	H08	28	Speed Link Hinge, Long	T519
8	Fan Cover	T504	29	Link Bush x 4	T520
9	Battery Strap x 2	T505	30	Washer, Engine Mount x 4	T521
10	Bolt, Battery Strap x 2	T506	31	Fuel Tank	R280
11	A-Frame	T507	32	Fuel Cap	R281
12	Pivot Bush	T508	33	Bracket, Tank Mount	T522
12A	Pivot Bush Washer	T527	34	Strap x 2	R282
13	Adjustment Bolt	T509	35	Engine Pulley	T200
14	Nut, 5/8" UNF	RD174	36	Key	RD126
15	Spring Washer	HD124	37	Grease Nipple	R33
16	Tension Nut 5/8" W x 2	T510	38	Grease Nipple	T524
17	Flanged Bush x 2	T511	39	Fuel Hose, Tank to Filter	T525
18	V-Belt, B59	Y41	40	Hose Clamp	T526
19	Drag Link	T528	41	Guide, Deck Support	T542
20	Steering Spindle & Gear	T513	--	Battery, 606	T315
21	Bush x 2	R91	--	Decal, (Hot Exhaust)	T909

SUB-FRAME ASSEMBLY



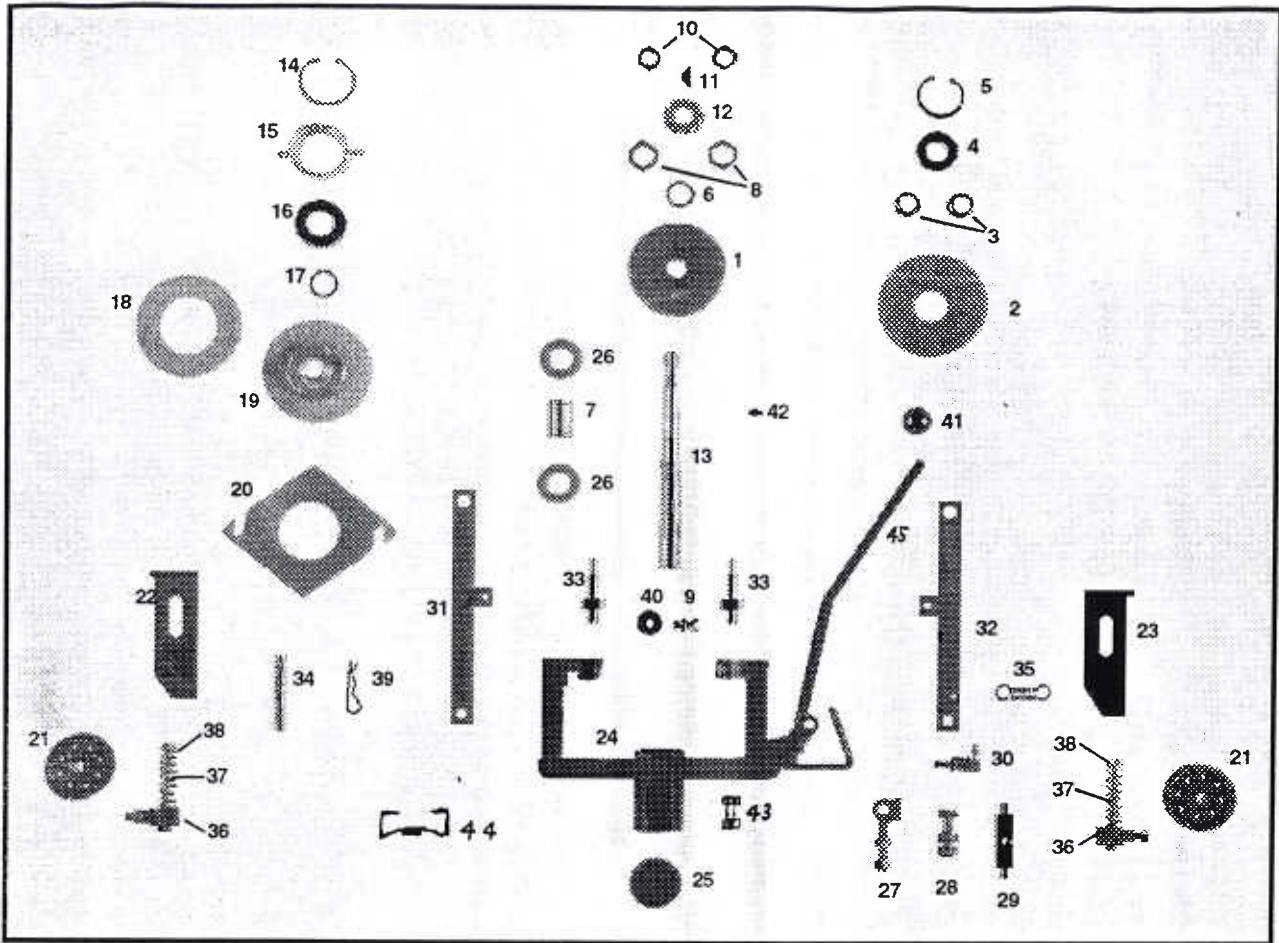
ILLUS	DESCRIPTION	PART No.	ILLUS	DESCRIPTION	PART No.
1	Sub Frame	T430	10	Rod, Conn. to s/n. 0325	T443
2	Deflector Plate	T431		from s/n. 0326	T439
3	Pivot Bolt & Lock Nut	T445	11	Crank Arm to s/n. 0325	T444
4	Pin 5/8"	T433		from s/n. 0326	T440
5	Link Pin	T434	12	Collar 1/2"	H54
6	Swivel Link	T435	13	Collar 5/8"	T441
7	Bush, Crossbar x 2	T436			
8	Washer, Crossbar x 2	T437			
9	Spring	D50			

MAIN DECK



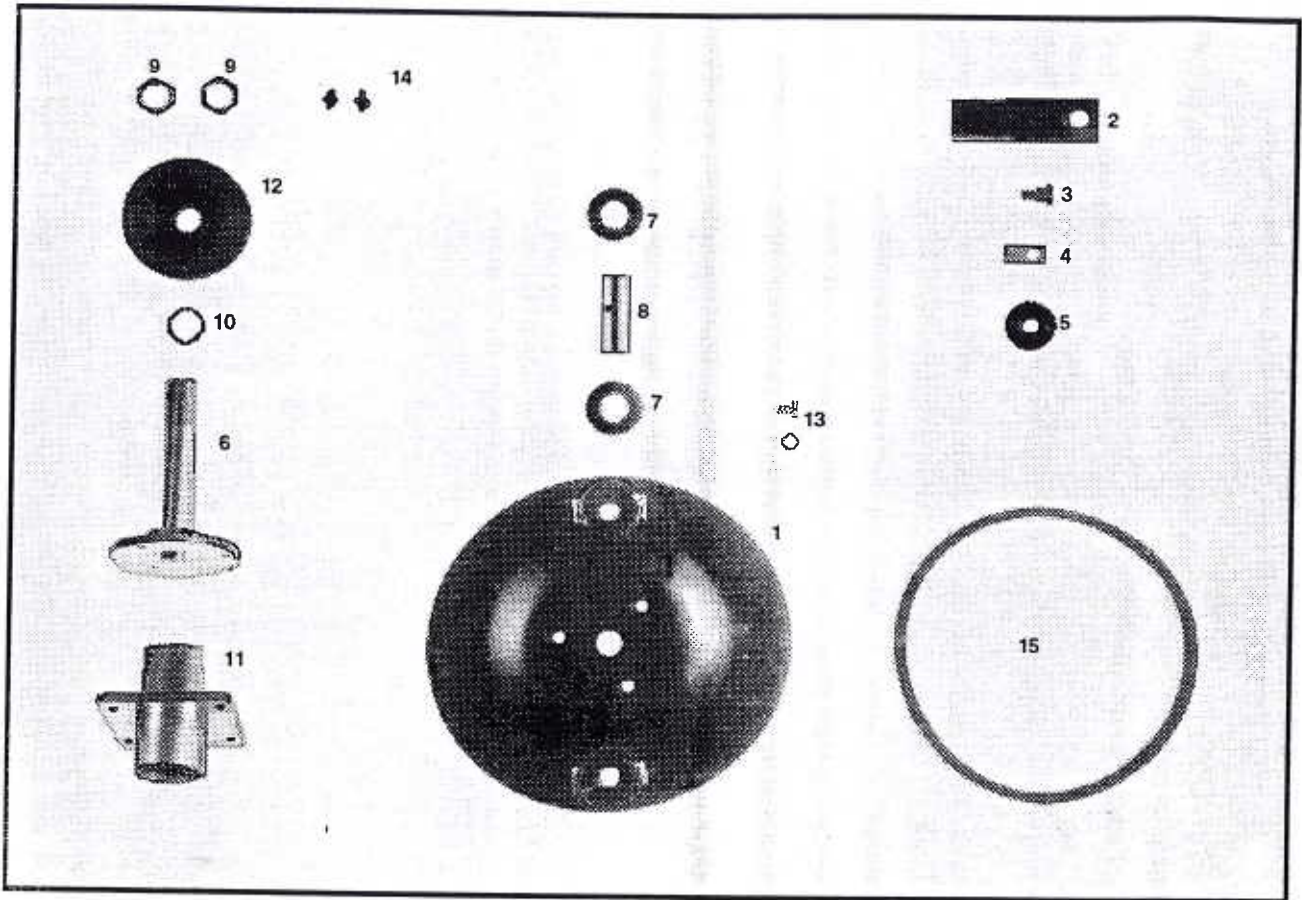
ILLUS	DESCRIPTION	PART No.	ILLUS	DESCRIPTION	PART No.
1	Main Deck	T400	10	Deck Wheel, Assembly x 2	MR50
2	Chute	T401	11	Bearing x2	MD18
3	Pulley Guard L.H.	T402	12	Tyre x 2	R57
4	Pulley Guard R.H.	T403	13	Bolt & Washer x 2	G02
5	Decal (Hands Free) x 2	T906	14	Spring	R87
6	Rear Mount Assembly	T411	15	Knob	Y13
7	Washer 2"	R77	16	Lever, Raise & Lower	T409
8	Spring Washer	HD124	17	Crossbar	T410
			18	Decal, (Raise & Lower)	T907

CLUTCH ASSEMBLY



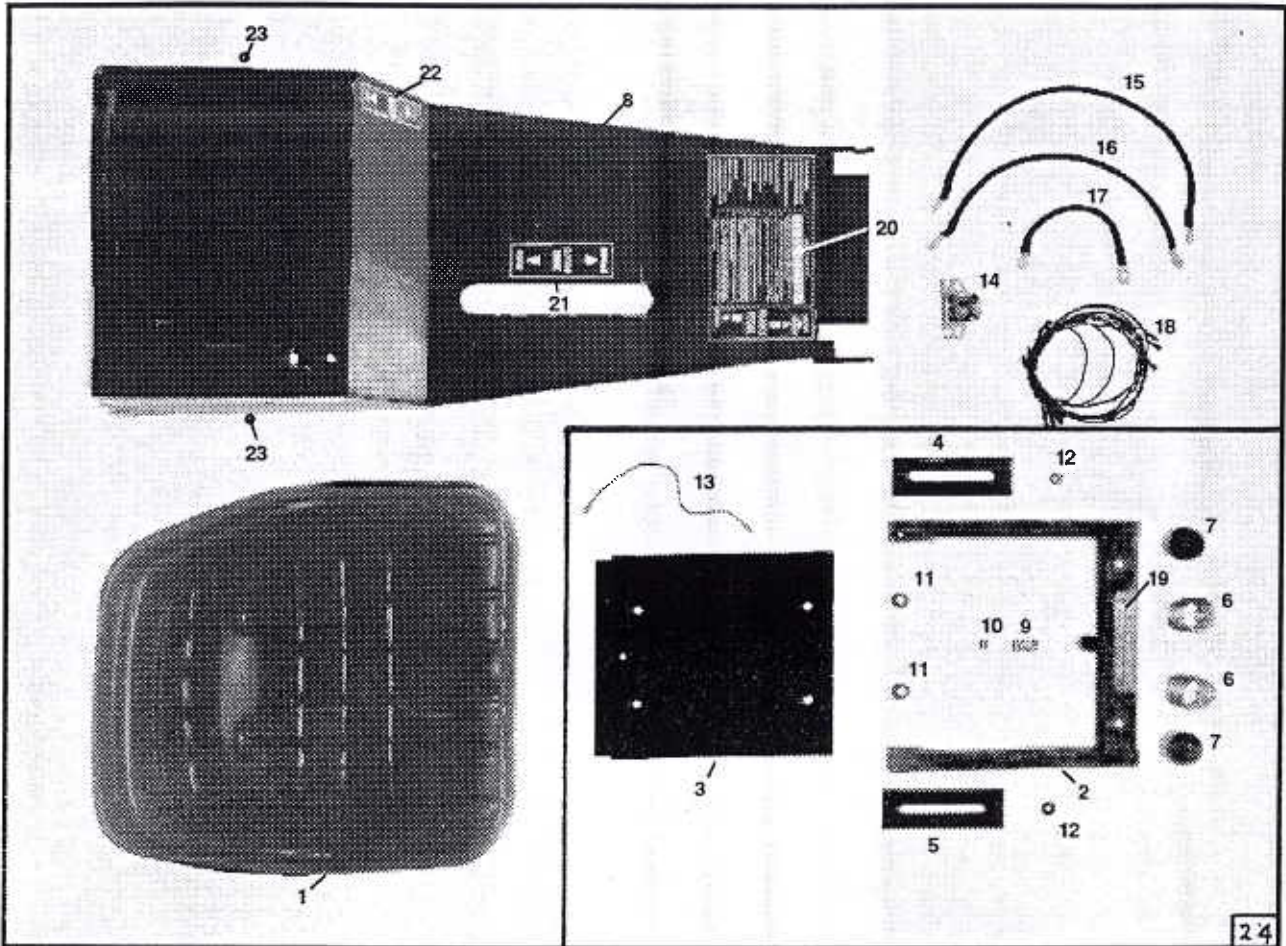
ILLUS	DESCRIPTION	PART No.	ILLUS	DESCRIPTION	PART No.
1	Double Pulley	T600	25	Cap, Bottom Housing	T622
2	Clutch Pulley	T601	26	Bearing, x 2 to s/n.0978 from s/n.0979	R28 G33
3	Bearing, Step Bush x 2	T602	27	Eye Bolt & Adjustor	T623
4	Clutch Bearing 6205	T603	28	Pivot Bolt 1.3/4"x1/2"	T624
5	Circlip 52mm int.	T604	29	Adjustment Block	T625
6	Seal Washer to s/n. 0979	T636	30	Safety Switch to s/n. 0952 from s/n. 0953	T308 T309
-	Shim Kit from s/n. 0979	T637	31	Side Strap L.H.	T626
7	Spacer Tube	T606	32	Side Strap R.H.	T627
8	Lock Nut x 2	G30	33	Adjustment Stud x 2	T628
9	Spring Washer & bolt	T607	34	Pin	T629
10	Lock Nut 3/4" unf.	T608	35	Spring, Tension	T630
11	Key, Woodruff 3/16"x5/8"	T609	36	Bracket Pin	T631
12	Clutch Drive Gear	T610	37	Bolt X 2,4"x3/8"	T632
13	Main Spindle	T611	38	Spring, Compression	H55
14	Circlip 62mm int.	T612	39	R-Clip x 4	T633
15	Bearing Holder	T613	40	Washer	DD111
16	Bearing 6206	T614	41	Knob	Y13
17	Circlip 30 mm ext.	RD105	42	Grease Nipple	R13
18	Clutch Lining	T615	43	Bolt x 6 3/8"x1.3/4"	T445
19	Clutch Plate & Lining	T616	44	Belt Guide	T634
20	Brake Plate	T617	45	Lever	T635
21	Jockey Pulley x 2	T618			
22	Bracket, L.H. Pulley	T619			
23	Bracket, R.H. Pulley	T620			
24	Main Housing	T621			

SPINDLE ASSEMBLY



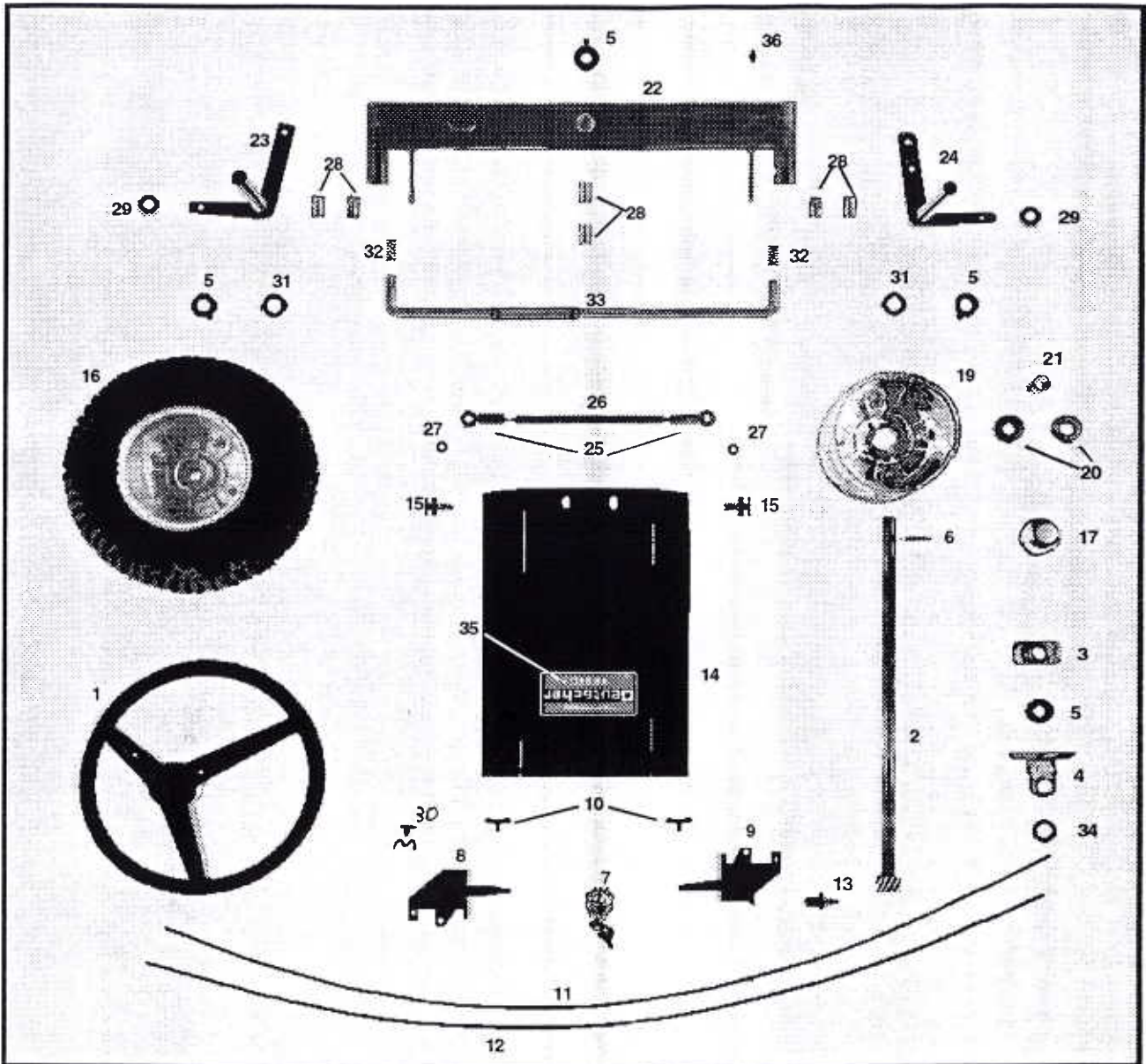
ILLUS	DESCRIPTION	QTY.	PART No.
1	Blade Plate	2	R32
2	Blade	4	R01
3	Bolt	4	D02
4	Nut	4	D03
5	Washer	4	D04
6	Spindle & Flange	2	T450
7	Bearing, (6205)	4	R28
8	Sleeve	2	T451
9	Lock Nut	4	G30
10	Washer	2	T452
11	Housing	2	T453
12	Pulley	2	T454
13	Bolt & Spring Washer	6	G36
14	Grease Nipple	2	R13
15	V-Belt, Dayco B32, Super 11	2	T432

SEAT & PANELS



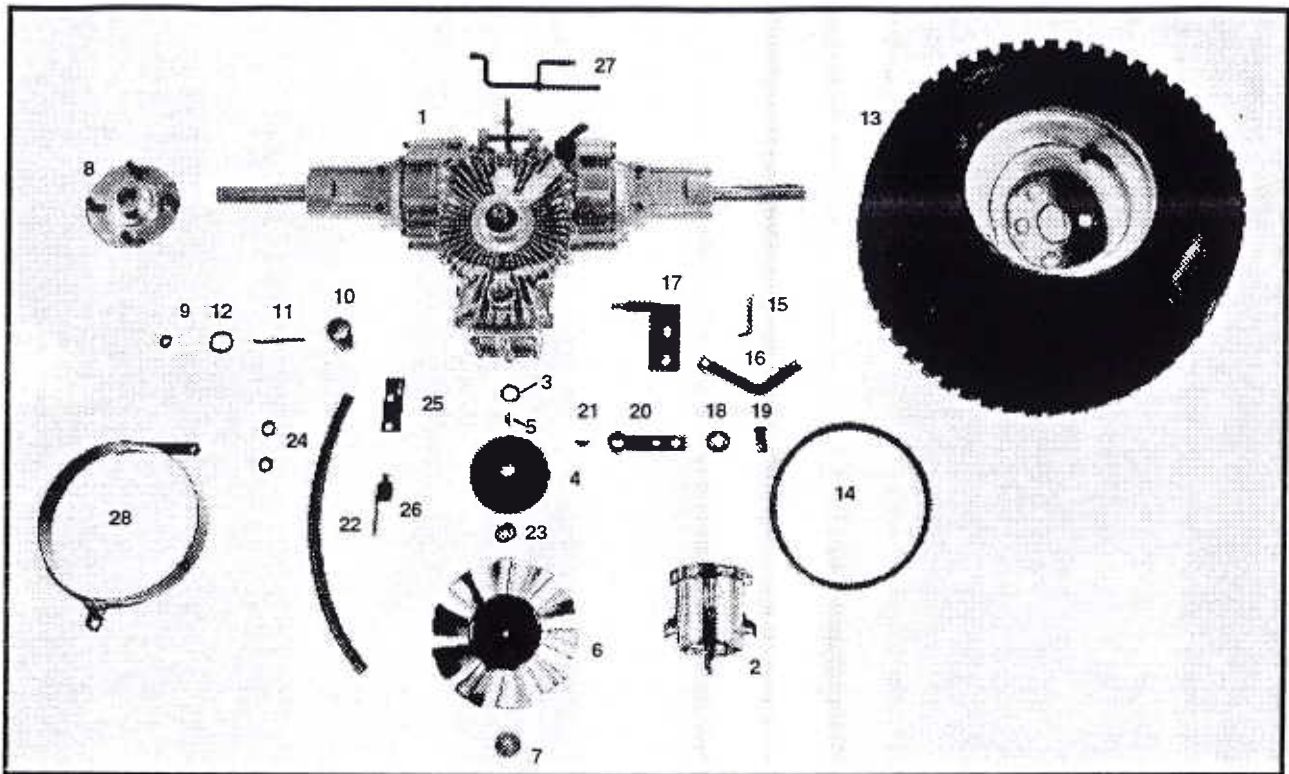
ILLUS	DESCRIPTION	PART No.	ILLUS	DESCRIPTION	PART No.
1	Seat	T530	14	Solenoid, (B&S)	T302
-	Back Rest, (Optional)	T541	15	Starter Cable 560mm (B&S)	T303
2	Seat Frame	T531	16	Battery Cable 460mm (B&S,H)	T304
3	Seat Base	T532		Battery Cable 330mm (H)	R323
4	Hinge Bracket L.H.	T533	17	Battery Cable 230mm (B&S)	R313
5	Hinge Bracket R.H.	T534	18	Wire Loom (B&S)	T305
6	Seat Spring x 2	T535		Wire Loom (H)	T306
7	Spring Cap x 2	T536	19	Decal, Seat Wire	T901
8	Seat Panel	T537	20	Decal, Starting Instructions	T902
9	Spring, Switch	D134	21	Decal, Cutter Engagement	T903
10	Insulator	T300	22	Decal, Park Brake	T904
11	Pivot Bush x 2	T538	23	Decal, Deutscher, Side Panel	T905
12	Adjustment Bolt x 2	T540	24	Seat Frame Assembly	T539
13	Wire Seat Switch	T301			

STEERING & FRONT END ASSEMBLY



ILLUS	DESCRIPTION	PART No.	ILLUS	DESCRIPTION	PART No.
1	Steering Wheel	T550	20	Wheel Bearings x 2	MR97
2	Steering Column & Gear	T551	21	Spacer	H514
3	Top Bearing	T552	22	Front Axle Beam	T566
4	Bottom Bearing	T553	23	King Pin L.H.	MR90
5	Collar	R92	24	King Pin R.H.	MR95
6	Roll Pin	T554	25	Ball End, 3/8" UNF x 2	T567
7	Key Switch	T316	26	Front Tie Rod	T568
8	Throttle Lever Assembly	T555	27	Spacer Washer	T569
9	Trans. Lever to s/n. 0952	T556	28	Bush x 6	R91
	from s/n. 0953	T574	29	Nut 5/8" UNF	RD174
10	T-Knob x 2	T557	30	Cable Clamp	T572
11	Throttle Cable	T558	31	Thrust Washer	R93
12	Transmission Cable	T559	32	Tie Rod Spring	R87
13	Safety Switch to s/n. 0952	T307	33	Rear Tie Rod	T570
	from s/n. 0953	T309	34	Hardened Washer	T571
14	Panel	T560	35	Decal, Steering Panel	T908
15	Hinge Pin x 2	T561	36	Grease Nipple	R13
16	Wheel Complete with T & T	T562	-	Decal, Trans. Lever	T910
-	Tyre 13-500-6	T563	-	Decal, Key Start	T911
-	Tube 13-500-6 TR87	T564	-	Decal, Throttle Lever	T912
17	Wheel Cap	R100			
19	Wheel Rim, C/W. Bearings	T565			

TRANSMISSION



ILLUS	DESCRIPTION	PART No.	ILLUS	DESCRIPTION	PART No.
1	Transaxle, Eaton 751	T100	19	Pin	T119
2	Tank & Cap to s/n. 0809	T101	20	Lever, Speed & Direction	T120
	from s/n. 0810	T140	21	Key, Woodruff 1/8"x1/2"	T121
3	Spacing Washer	T102	22	Hose to s/n. 0809	T122
4	Pulley	T103		from s/n. 0810	T141
5	Key. 3/16"x5/8"	T104	23	Spacer, Fan	T123
6	Fan	T105	24	Hose Clamp x 2 to s/n. 0809	T124
7	Washer & Bolt	T106		from s/n. 0810	T142
8	Hub	T107	25	Cable Bracket	T125
9	Wheel Nut	T108	26	Dump Valve Lever	T126
10	Wheel Spacer	T109	27	Brake Activator Lever	T127
11	Key	T110	28	Cowling	T131
12	Circlip 25mm H.D.	T111	--	Hose Fitting 90.to s/n. 0809	T130
13	Wheel Complete, Turf Tread	T112		from s/n. 0810	T143
--	Wheel Rim	T113	--	Filter, Internal	T132
--	Tyre, Turf Tread 18-850-8	T114	--	Gasket, Internal Filter	T133
--	Tyre, Knobby 18-950-8	T137	--	Cable Clamp	T572
--	Wheel Complete, Knobby	T136	--	Filler Plug & Screw	T134
--	Tube 18-850-8	T115			
14	V-Belt, A25	D15			

SUNDRY PARTS NOT ILLUSTRATED

DESCRIPTION	PART No.
Decal Set	T900
Paint, Touch-up Pressure Can 150g, Hawthorn Green	T920
Owner's Manual	T930
Parts Manual	T931
Oil Drain Valve, B&S	T201
Oil Drain Valve, Honda	T202
Tow Hitch	T523
Oil Filler Pump	T932
Hydro Oil, 4lt. Hyspin AWH68	T940

NOTES

NATIONAL CUSTOMER SERVICE

ROVER MOWERS LIMITED

CURTIN AVENUE

EAGLE FARM QLD 4009

FREE CALL 1800 803 537

FREE FAX 1800 806 659

MANUFACTURED IN AUSTRALIA BY
H.F. DEUTSCHER PTY. LTD.

A.C.N.005 576 830

711 CRESWICK ROAD
BALLARAT 3350